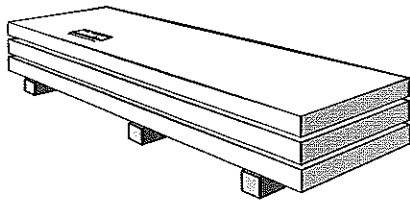
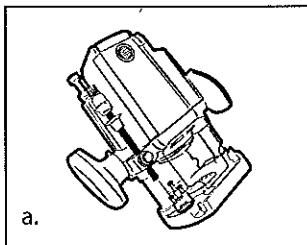


# Wall Panel Installation Guide

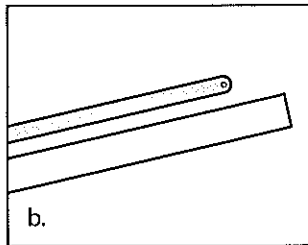
## Preparation



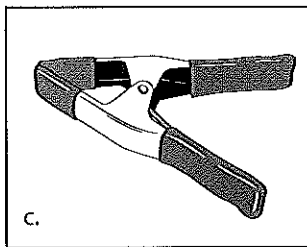
1. The shower panels must be conditioned for at least 24 hours at room temperature prior to fitting. The shower panels should be stored horizontal and flat in a dry, well ventilated area. In temperatures below 5 degrees Celsius the



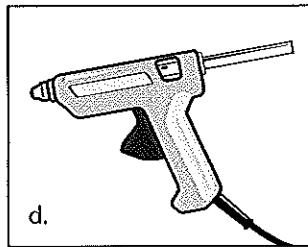
a.



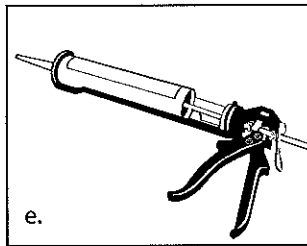
b.



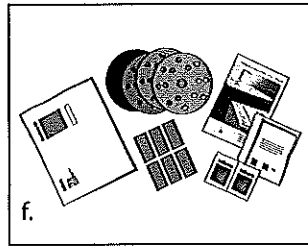
c.



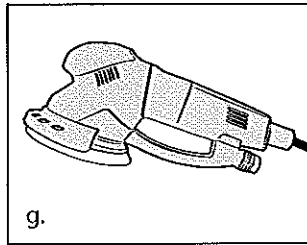
d.



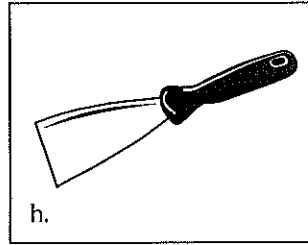
e.



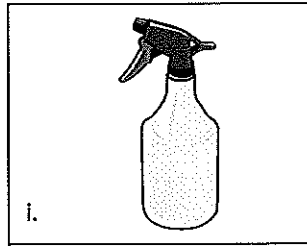
f.



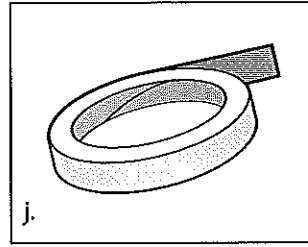
g.



h.



i.



j.

material can become brittle and may become prone to handling damage.

### 2. Tooling required

- a Router and suitable cutter (12mm twin flute)
- b. Straight edge
- c. Clamps
- d. Hot melt gun and adhesive
- e. Silicone/mastic applicator and good quality sealant
- f. minerva jointing adhesive and cleaning wipes
- g. Random orbital sander
- h. Edge strip/paint scraper
- i. Water sprayer
- j. Narrow (25mm) masking tape

3. Make sure all the walls are flat, dust free and clear of debris before commencing any works.

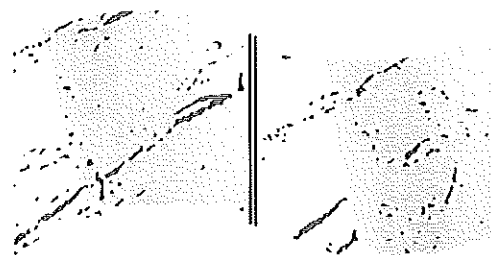


Fig.4

4. Ensure the panelling is checked for décor match before commencing any works – veined products may need to be checked for directional preference.

5. If there is any pipework or obstructions, make a suitable template using mdf, etc to cut to the required shaping.

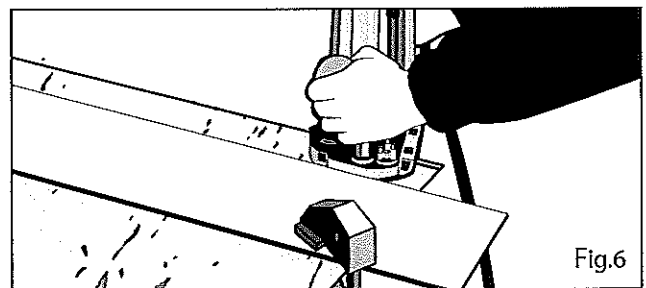
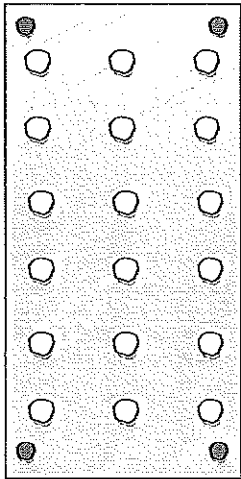


Fig.6

6. Skim the edges to be joined by 1mm to

2mm using a straight edge and router fitted with a sharp cutter (we recommend a 12mm twin flute).



7. At approximately 500mm centres place dabs of hot melt adhesive around the outside edges and to the centre of the rear side of the panel. At approximately 150mm centres place dabs of good quality low modulus silicone adhesive.

● Hot Melt Adhesive  
○ Silicon Adhesive

Fig.7

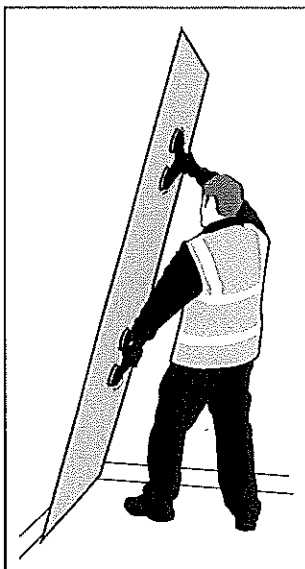


Fig. 8a

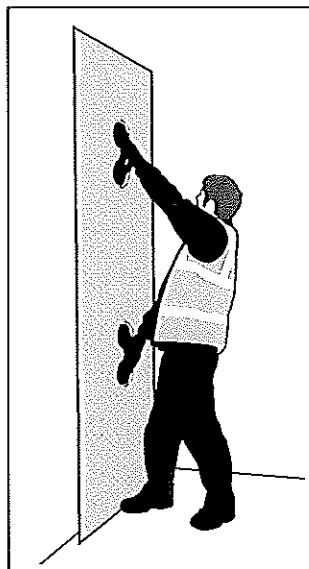


Fig. 8b

8. Place and square the panel firmly against the wall until the hot melt adhesive has gripped securely.

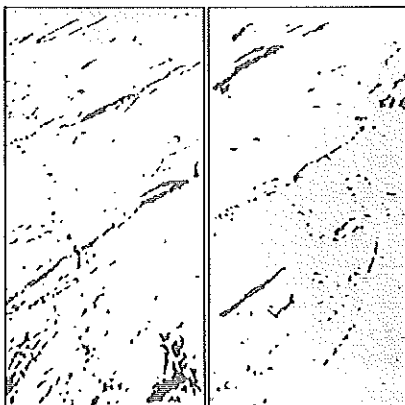


Fig. 9

9. Without applying any Minerva adhesive, offer up the next panel to the edge of the panel applied to the wall.

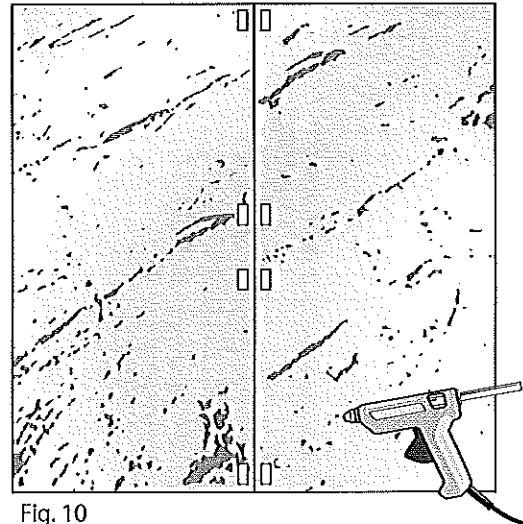


Fig. 10

10. Using hot melt adhesive position and bond the mdf/wooden blocks 10mm away on either side of the edge to be jointed. Repeat this along the sheet placing the blocks at approximately 300mm intervals.

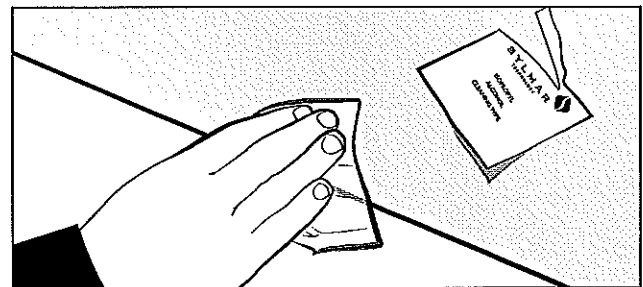


Fig.11

11. Take the un-bonded panel and clean the exposed edges to be jointed using the supplied isopropyl alcohol wipes including the sheet bonded to the wall.

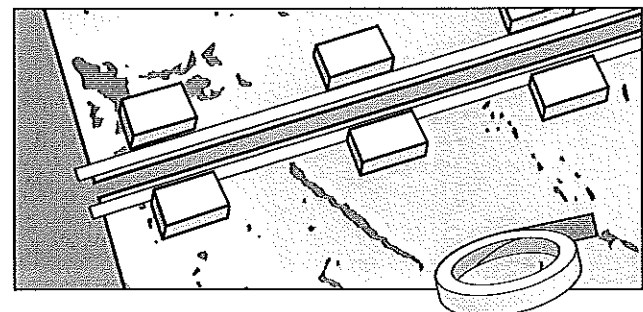


Fig.12

# Fitting Instructions

12. Apply a narrow strip of masking tape approximately 3mm from the cut edge along the full length of each of the edges to be jointed. This will prevent excess spread of adhesive in the area to be sanded later on in the process.

13. Apply dabs of silicone to the rear of the panel at similar intervals to the first sheet. (see Fig 7).

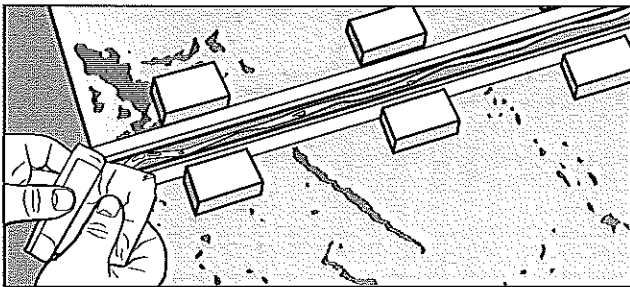
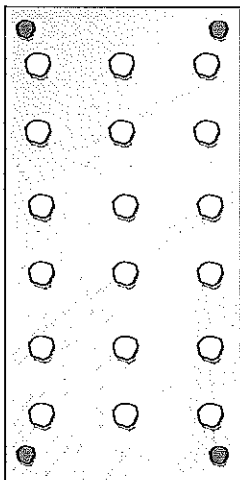


Fig.14

14. Mix together the minerva jointing adhesive and apply a generous bead to the cut edges to be joined.



15. Quickly apply hot melt dabs at similar intervals to the first sheet

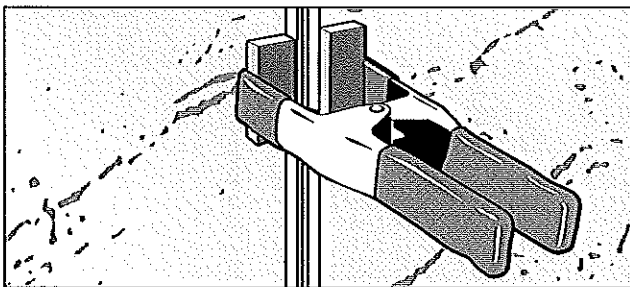


Fig.16

16. Offer the sheet up to the installed sheet and then use clamps to pull the edges together

at the mdf block positions ensuring there is a noticeable bead of adhesive present to the full length of the panel join. Remove masking tape before the adhesive is fully dried.

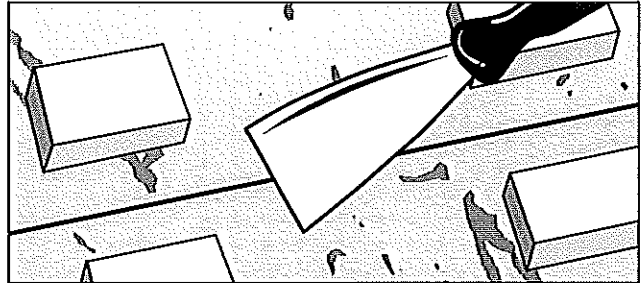


Fig.17

17. Using a small piece of edging or a paint scraper (NOT FINGERS) check the panels to ensure they are level. If adjustment is required, tap gently with a rubber mallet to make the necessary adjustments.

18. Once the adhesive is fully cured - 45-60 minutes - remove the mdf blocks and sand the joint using a random orbital sander with the abrasive discs provided:

DRY - P120/P240/P320/P500

DAMP - GREY WOVEN PAD

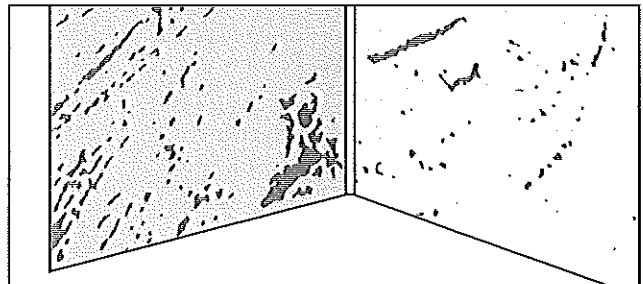


Fig.19

19. Apply optional corner bead using quality low modulus silicone sealant.