

Product Finish: Chrome

Product code: AT1191
EAN13 barcode: 5060048382907



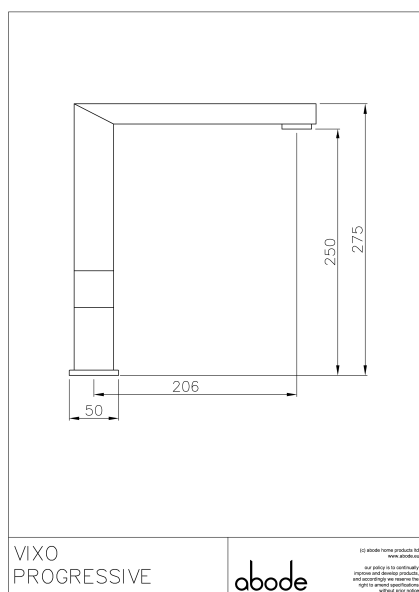
Note: the image shown may not reflect the product finish, chrome finish is typically depicted.

Product features:

- Metal construction throughout
- Innovative progressive control valve design
- Minimalist planate design form
- Swivel spout for maximum flexibility
- Note: this tap has flow control of cold only and temperature mixing

Additional information / Parts included:

Product dimensions:



- Overall Height / projection: 275 mm
- Exit reach: 206 mm
- Exit height: 250 mm
- Centre distance(s): 50 mm

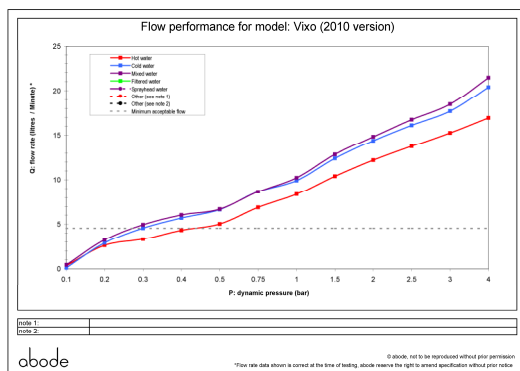
- Base diameter(s): 50 x 50mm
- Recommended hole diameter: Ø 35 mm
- Max. surface depth: 65 mm

- Spout diameter: 40 x 20 mm
- Spout aerator size: 22mm

Packaged properties:

Box length: 430mm	Box depth: 70mm
Box width: 340mm	Units per outer: 5
Tap only weight: 1.89kg	Boxed weight: 2.60kg

Product flow characteristics:



- Min / Max water pressure: 0.50 / 5.5 bar
- Recommended / Max water temperature: 46°C / 70°C
- Part G - Mixed flow rate at 3 bar (litres / min): 18.47

- Control valve type: Progressive ceramic disc half turn
- Product flow characteristics: Single flow
- Non return valve(s): Hot & cold (integral to tails)

- Aerator type: Plastic mesh diffuser
- Accepts revolve / spray areator: No
- Spout connection method: Grub screw

- Tail pipe inlet / outlet size: M12 / 1/2" BSP Male
- Inlet pipe type / length: flexible stainless braided hose / 245 mm

Care instructions summary:

- Clean the mixers and showers regularly as required, using soap, do not use any other cleaners.
- Regular cleaning will prevent the build up of lime scale and dirt
- After cleaning rinse thoroughly with clean water to remove any cleaner residue
- Residues of sink & worktop cleaners can also cause damage, so rinse with clean water after using, avoid contact with any abrasives

Warranty Summary (Full details available on request):

- Materials and workmanship defects warranted for 5 years
- Valves and working parts warranted for 5 years
- Surface warranty defects warranted for 1 year
- O-rings, hoses & gaskets warranted for 1 year