

|                 |        |                |               |
|-----------------|--------|----------------|---------------|
| Product Finish: | Chrome | Product code:  | AT1058        |
|                 |        | EAN13 barcode: | 5060048380576 |

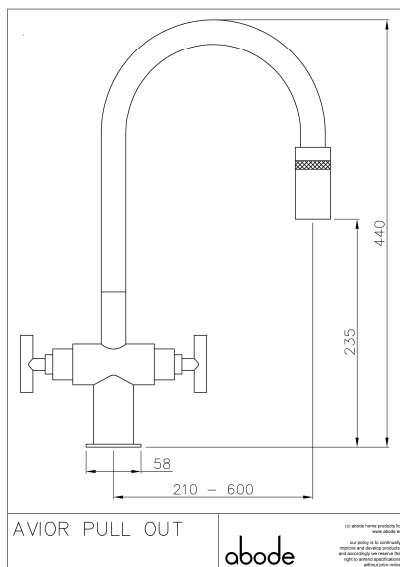


Note: the image shown may not reflect the product finish, chrome finish is typically depicted.

### Product features:

- Metal construction throughout
- Quarter turn handle action for precise flow control
- Solid and functional European architect design styling
- Extending spout end for ease of use (non spray)
- Antisplash spout supplied as standard

**Additional information / Parts included:**

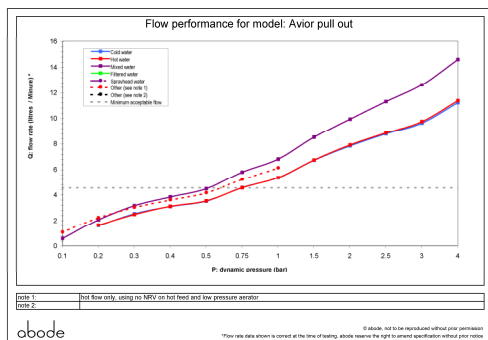
**Product dimensions:**

- **Overall Height / projection:** 440 mm
- **Exit reach:** 210-600 mm
- **Exit height:** 235 mm
- **Centre distance(s):**
- **Base diameter(s):** 58 mm
- **Recommended hole diameter:** Ø 35 mm
- **Max. surface depth:** 20 mm
- **Spout diameter:** 26 mm
- **Spout aerator size:** 24mm

### Packaged properties:

|                                |                             |
|--------------------------------|-----------------------------|
| <b>Box length:</b> 430mm       | <b>Box depth:</b> 70mm      |
| <b>Box width:</b> 340mm        | <b>Units per outer:</b> 5   |
| <b>Tap only weight:</b> 2.13kg | <b>Boxed weight:</b> 3.41kg |

**Product flow characteristics:**



- **Min / Max water pressure:** 0.50 / 5.5 bar
- **Recommended / Max water temperature:** 46°C / 70°C
- **Part G - Mixed flow rate at 3 bar (litres / min):** 12.60
- **Control valve type:** Ceramic disc QT
- **Product flow characteristics:** Single flow
- **Non return valve(s):** Hot & cold (integral to tails)
- **Aerator type:** Plastic mesh diffuser & flow straightener
- **Accepts revolve / spray areator:** No
- **Spout connection method:** One way snap fit
- **Tail pipe inlet / outlet size:** M10 / 1/2" BSP Male
- **Inlet pipe type / length:** flexible stainless braided hose / 270 mm

**Care instructions summary:**

- Clean the mixers and showers regularly as required, using soap, do not use any other cleaners.
- Regular cleaning will prevent the build up of lime scale and dirt
- After cleaning rinse thoroughly with clean water to remove any cleaner residue
- Residues of sink & worktop cleaners can also cause damage, so rinse with clean water after using, avoid contact with any abrasives

**Warranty Summary** (Full details available on request):

- Materials and workmanship defects warranted for 5 years
- Valves and working parts warranted for 5 years
- Surface warranty defects warranted for 1 year
- O-rings, hoses & gaskets warranted for 1 year