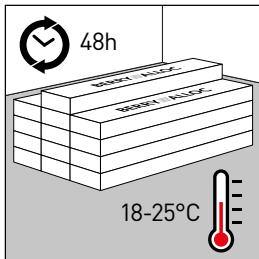


Pure Click 40 is an LVT floor, designed for use in residential areas.

Pure Click 55 is suited for both residential as commercial areas such as shops, hotelrooms, ...

To obtain a perfect result, we recommend to follow installation instructions carefully.

1. PREPARATION



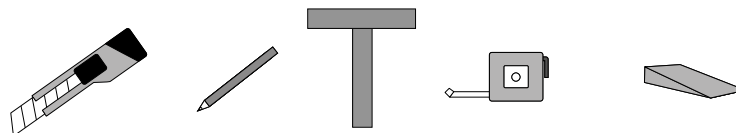
TRANSPORT AND STORAGE

Transport your floor carefully on a flat surface. Planks should be stored flat in their packages, in small neat piles, max 5 boxes high.

It is important to store the planks for at least 48 hours at room temperature (18-25°C) before installation. This temperature should be maintained throughout the installation and at least 24 hours after the installation.

Storage: Pure must be stored inside.

TOOLS



Trimming knife, saw or guillotine, pencil, T-square, measurer and spacers (wedges).

SUBFLOOR

Careful subfloor preparation is essential for an excellent result. Roughness or unevenness of the subfloor (more than 3 mm per m) may telegraph through the new floor, resulting in an unsightly surface and cause excessive wear on high spots or indentation on lower spots.

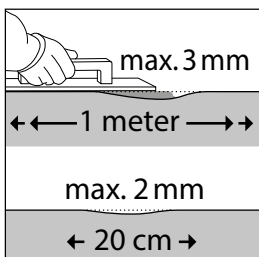
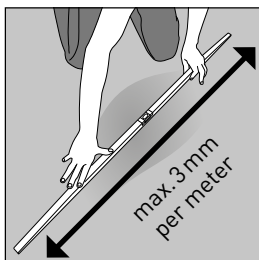
Remove all traces of plaster, paint, glue, oil, grease, ... the subfloor must be clean, flat, dry and stable. Remove textile floorcoverings (as carpet, needle felts, ...). Remove all debris (including nails) and vacuum.

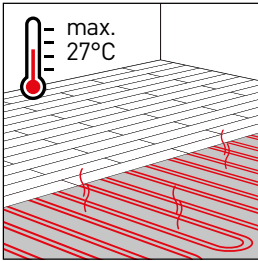
Pure Click can be installed on top of concrete, tiles, wood and most existing hard surface floor coverings, provided that the subfloor is smooth, dry and clean.

Although Pure Click is insensitive to moisture, subfloors must be checked out for moisture problems. If there is moisture, carry out sealing before installation. Excessive moisture can generate mould or fungus.

Make sure floor level deviation is maximum 3 mm per m and 2 mm per 20 cm. If the indicated deviation is exceeded, subfloor must be evened out with a suitable filler or leveling compound and check if a sealer is needed.

If you are not certain about the quality or suitability of your subfloor for installation of Pure Click, then contact your dealer, he will be more than happy to help you.



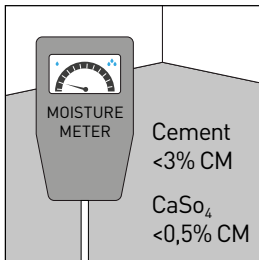


Floor heating

Pure click is compatible with floor heating and cooling systems, provided that the heated floor temperature does not exceed 27°C

Switch of the floorheating 24 hours before installation and also during the installation. After 24 hours of acclimatisation, increase the floor heating gradually with 5°C daily, until max 27°C floor temperature. In case of electrical floor heating, we advice not to exceed 60W/m².

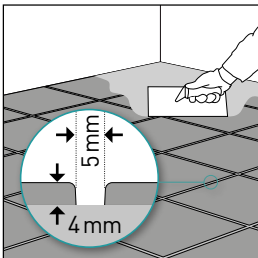
The subfloor construction (surface) of the heating/cooling system must be hard



Preparation in case of concrete / screed subfloor

Let new concrete dry sufficiently. The moisture content on the subfloor must be less than 75 RH at min 20°C. Max 3% CM in case of cement and 0,5% in case of anhydrite. Always record and keep your moisture content results.

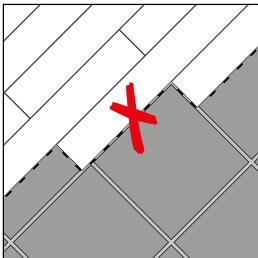
Repair surface imperfections with an appropriate repair compound and check if a primer or sealer is needed. Vacuum the subfloor afterwards to remove all debris.



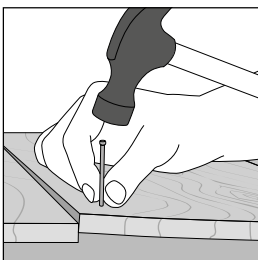
Preparation in case of tile subfloor

Check the subfloor on moisture problems.

It is not necessary to fill the grouts of a subfloor of ceramic tiles with joints, when they not exceed 5 mm width and 4 mm depth.



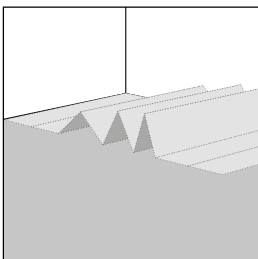
Never place the joints, where two planks are clicked together, parallel on top of the existing joints of the old tile subfloor.



Preparation in case of wooden subfloor

Check the floor on insect infestations.

Make sure the subfloor is level and nail down loose parts.

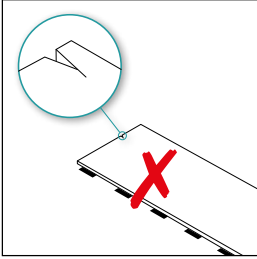


UNDERLAY

We advise to use the BerryAlloc LVT underlay (DreamTec+) to reduce the walking and transition sound performance.

In humid rooms such as bathrooms, we recommend to place a waterproof membrane in case your subfloor is no water resistant (f.e. wooden beams)

2. PRECAUTIONS

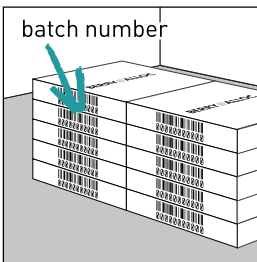


Pure Click is not suitable for any outside use, solariums or saunas.

Avoid long lasting exposure to direct sunlight. Extreme solar irritation, hotness and strong temperature changes can cause damage.

Check in optimal light conditions, before and during installation, all planks on visible defects. Planks with defects must not be used.

Make sure that you mix the panels of different boxes, to minimize shade variations. This will ensure a more natural looking floor.



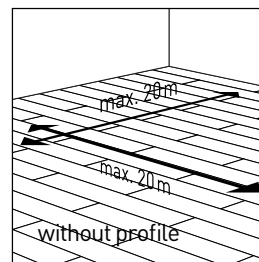
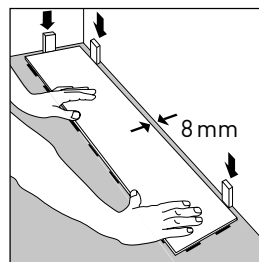
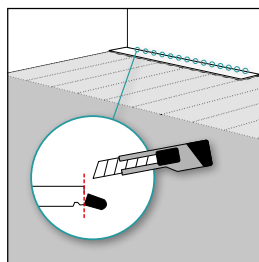
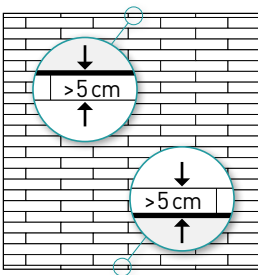
For tiles : Use only single production batch number for each installation. Always keep the production batch number (printed on the box), together with your order form /invoice.

3. INSTALLATION

Check that the floorplanks are without visible defects before installing them.

Pure Click should be installed floating, meaning that the floor can move in any direction, having enough space to all walls or any fixed object, i.e. not to be screwed or nailed down to the subfloor.

The installation of the floor must be the last operation in the project. Kitchen cabinets, fireplaces etc, can not be installed on top of the flooring.



Measure the room to become a balanced lay out. By measuring, you will be able to determine if the first row needs to be cut. The first and last row should not be less than 5 cm wide.

If the first row of panels does not need to be trimmed in width, you must remove the locks on the side that faces the wall.

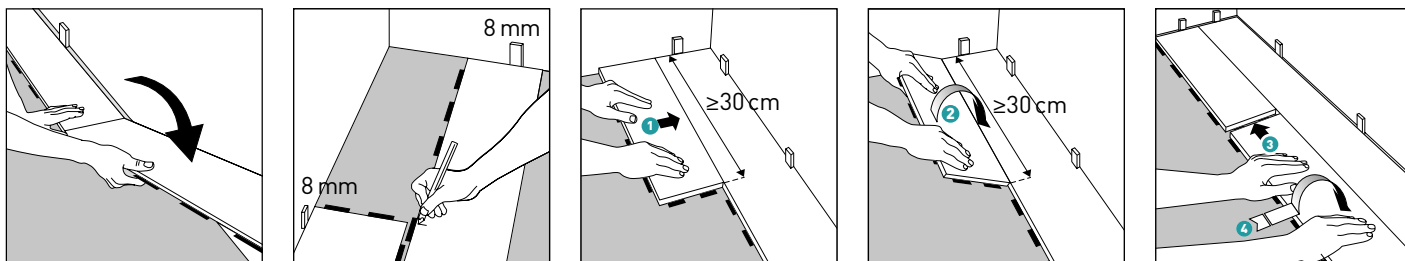
It is important to leave an 8 mm expansion gap around the total perimeter of the floor and around columns, pipes, thresholds etc.

The largest recommended installation area is 20 x 20 m. An expansion profile must be used in door openings, and if/or the area is longer / wider than 20m.

Make sure that you mix up the panels of different boxes, to minimize shade variations. This will ensure a more natural looking floor.

Do not use a hammer to put planks together. Cut boards with stanley knife decor side up.

PLANKS

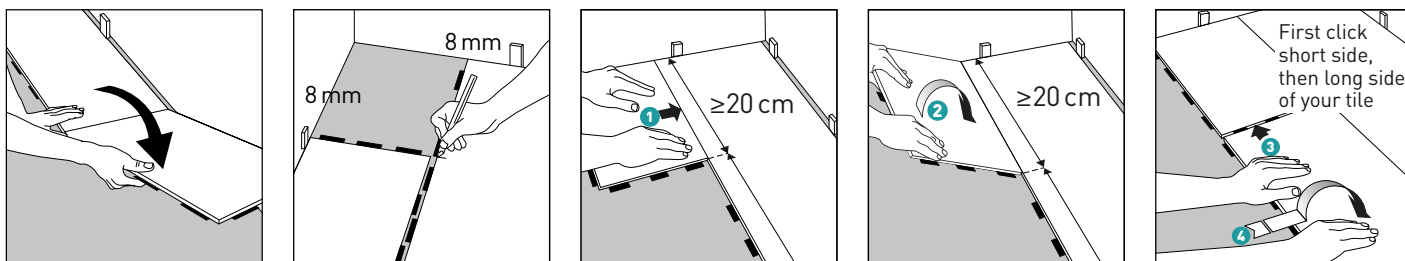


Always ensure that the short end joints will be staggered minimum 30 cm (= 3 click elements) when you start the next row. Use the leftover piece from the previous row as the first piece of the next row, provided that this piece is at least 30 cm. In order to find a connection with the locking tabs of the previous row, it may be necessary to cut off an extra part of the leftover piece.

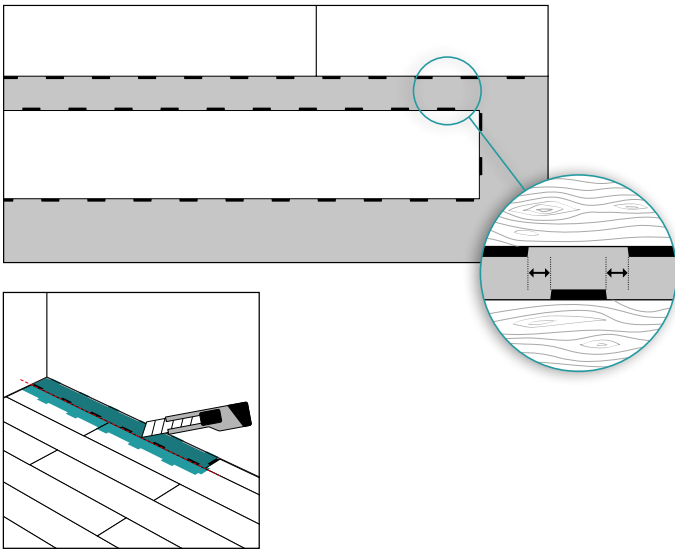


Pure Click planks can be installed in several patterns.

TILES



Always ensure that the short end joints will be staggered minimum 20 cm (= 2 click elements) when you start the next row. Use the leftover piece from the previous row as the first piece of the next row, provided that this piece is at least 20 cm. In order to find a connection with the locking tabs of the previous row, it may be necessary to cut off an extra part of the leftover piece.



The click elements of the new row, need to be positioned, exactly in the middle of two locks of the previous row.

From second row on, always connect the short side first and then long side.

To install the last row, position a loose panel exactly on top of the last laid. Place another panel upside down up to the wall and mark the panel underneath. Cut the marked panel to size and fit in place.

This method should be repeated for each panel until the last row is complete. For doormouldings, lay a panel face down next to the door moulding. Saw the panel, then slide the plank under the moulding.

4. FINISHING

Use Pure Click accessories for a perfect result.

Never attach skirtings to the floor itself, neither with glue nor silicone.

5. MAINTENANCE

Consider saving a few planks for any potential future repairs.

DOORMATS

To keep your floor in good condition, it is important to place non rubber backed doormats at all entrances, to prevent dirt or grit on your floor. Placing doormats will eliminate abrasive particles driven by footwear and will reduce damages. Do not use rubber backed mats, as longlasting contact with rubber can cause permanent stains.

Rolling office chairs, furniture legs, fitness appliances, ... should be fitted with non-rubber casters, to avoid permanent damage on your floor.

Use soft, non rubber felt protector pads under the feet of furniture and chair legs.

CLEANING

Initial Cleaning

First remove all dirt and dust from the flooring with a brush or vacuum cleaner. Then clean with water and a neutral appropriate cleaning agent, at least twice and until the water stays clean. We strongly recommend to use BERRYALLOC Vinyl Planks cleaning agents. Any other cleaning product may contain agents that damage resilient floor surfaces. The coating of the top-layer makes a specific treatment after installation unnecessary.

Regular cleaning instructions

Vacuum or wet mop. Use when required a solution of clean water and mild detergent or domestic floor cleaning emulsion. We strongly recommend to use BERRYALLOC Vinyl Planks Cleaning products as other products may damage your flooring surface. Do not pour water over the floor or leave a puddle of water on the floor. Rinse thoroughly and soak up residual water. NB: the floor can feel more slippery when becoming wet. Spots, marks and spillages should be wiped up as soon as possible.

Do not use chlorinated solvents. Never use wax or varnish coating.

Never use maintenance products that contain wax or oil.

6. WARRANTY INFO AND CONDITIONS

Warranty for first user:

Pure Click planks are guaranteed under normal conditions of use against any manufacturing defects from their date of purchase to the original customer.

This warranty covers all abnormal degradation of this product, given that Pure Click planks are installed and maintained in accordance with the instructions provided. This warranty covers the replacement of Pure Click planks determined as defective with equivalent- or similar-quality Pure Click planks from the product line existing at the time of the claim. This warranty does not involve a financial reimbursement under any circumstances or costs of removal or installation.

This warranty does not cover:

- Normal wear and tear
- Any mechanical damage or other alteration caused by use not in accordance with the BerryAlloc installation instructions
- The occurrence of accidents, misuse or abuse
- Damage caused by using incorrect cleaning methods or unsuitable detergents
- Damage due to heavy chairs or furniture: it is recommended that you use felt pads under chairs and furniture to reduce the possibility of surface scratching and marking
- Damage due to sand or grit: it is recommended to use doormats on the inside and outside of all external doorways to prevent grit from being carried around across the floor
- Damage due to scratching
- Installation of any other pattern as described under point "Installation"

When noticing a defect, contact your dealer within 2 weeks with your original purchase receipt.
For more information: www.berryalloc.com

7. LEGAL INFORMATION

This document presents the general installation instructions, based on the latest available information. For best result, and validity of the guarantee, these instructions should be followed carefully.